

# INSTALL/REMOVAL INSTRUCTIONS: WINDOW REGULATOR

**ATTENTION:** Refer to the appropriate shop manual for your vehicle to obtain specific service procedures for this part. If you do not have a service manual or lack the skill to install this part, it is recommended that you seek the services of a qualified technician. Pay special attention to all cautions and warnings included in the shop manual. Read and follow all instructions carefully.

## REMOVAL/INSTALL OF WINDOW REGULATOR (741-586) Ford Econoline Van 1992–2006

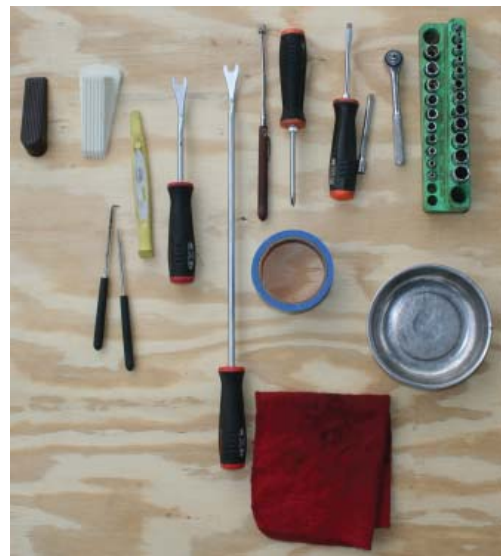
### General Tech Tips:

- Use painter's tape rather than duct tape to secure window. It will not damage paint or leave sticky residue.
- A plastic pry tool is useful. It will not easily damage delicate trim like a screwdriver or metal pry bar.
- The replacement regulator should have a liberal amount of grease on slide area. If there is not much grease present, white lithium grease works well to lubricate the slide area.
- Aftermarket window tinting can cause the window to travel slower and put additional strain on the window regulator assembly.
- Window run channels should be cleaned and lubricated before installation of a new window regulator assembly. Silicone spray works well.

### Tools required for removal and installation of window regulator and motor assembly:

- **Silicone spray lubricant**
- **Trim panel removal tool**
- **Pick**
- **Saddle cup assembly, tape, or wedge to hold window in place**
- **Flat-blade screwdriver or plastic pry tool**
- **10mm socket or driver**
- **Phillips screwdriver**
- **Grease pencil or marker**
- **T-20 Torx bit**
- **1/4" drill bit, 3/8" reversible drill**
- **Body fasteners (Dorman pn# 702-013)**
- **Pop rivet gun (optional)**

**PLEASE WEAR SAFETY GLASSES!**



#### Disclaimer:

Even though every attempt is made to ensure this information is complete and accurate, it is impossible to account for all possible circumstances or situations. Please consult with a qualified auto technician before attempting to perform any work you are not qualified to do. Automobiles can be hazardous to work on; be sure to take all necessary safety precautions. Failure to do so may result in property damage or personal injury. Certain motor vehicle standards and performance requirements may apply to your motor vehicle (such as Federal Motor Vehicle Safety Standards by the National Highway Traffic Safety Administration). Be sure that your work is performed in accordance with such standards and that you do not disable any motor vehicle safety feature.

©2013 Dorman Products, Inc.

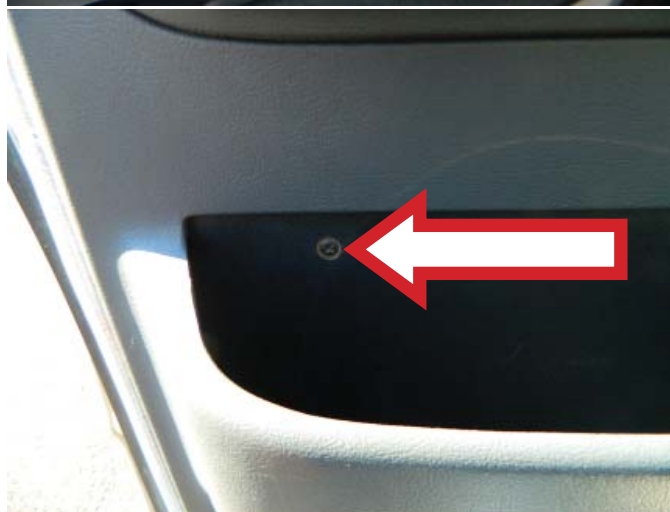
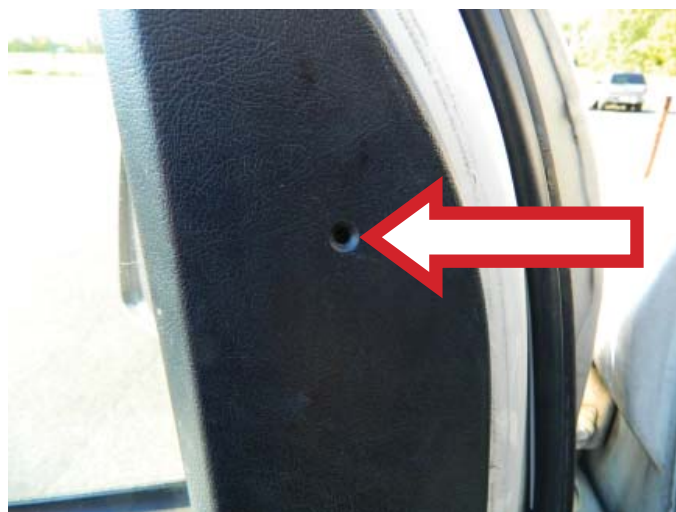
No reproductions in whole or in part without prior written approval.

# INSTALL/REMOVAL INSTRUCTIONS: WINDOW REGULATOR

**ATTENTION:** Refer to the appropriate shop manual for your vehicle to obtain specific service procedures for this part. If you do not have a service manual or lack the skill to install this part, it is recommended that you seek the services of a qualified technician. Pay special attention to all cautions and warnings included in the shop manual. Read and follow all instructions carefully.

## Removal Instructions

**STEP 1:** Using a Phillips head screwdriver, remove the four (4) interior door trim panel retaining screws.



**Disclaimer:**

Even though every attempt is made to ensure this information is complete and accurate, it is impossible to account for all possible circumstances or situations. Please consult with a qualified auto technician before attempting to perform any work you are not qualified to do. Automobiles can be hazardous to work on; be sure to take all necessary safety precautions. Failure to do so may result in property damage or personal injury. Certain motor vehicle standards and performance requirements may apply to your motor vehicle (such as Federal Motor Vehicle Safety Standards by the National Highway Traffic Safety Administration). Be sure that your work is performed in accordance with such standards and that you do not disable any motor vehicle safety feature.

©2013 Dorman Products, Inc.

No reproductions in whole or in part without prior written approval.

# INSTALL/REMOVAL INSTRUCTIONS: WINDOW REGULATOR

**ATTENTION:** Refer to the appropriate shop manual for your vehicle to obtain specific service procedures for this part. If you do not have a service manual or lack the skill to install this part, it is recommended that you seek the services of a qualified technician. Pay special attention to all cautions and warnings included in the shop manual. Read and follow all instructions carefully.

**STEP 2:** Using a trim panel removal tool, place the tool between the interior door trim panel and the door and pry toward you to release the interior door trim panel from the door.



**STEP 3:** Using a trim panel removal tool, remove the interior door handle bezel assembly.



**STEP 4:** To remove the power switch assembly, lift it in an upward motion. Once you have released the power switch assembly, place the switch through the opening of the interior door trim panel.

**STEP 5:** To remove the interior door trim panel, grasp the interior door trim panel from the bottom and lift it in an upward motion.

Disclaimer:

Even though every attempt is made to ensure this information is complete and accurate, it is impossible to account for all possible circumstances or situations. Please consult with a qualified auto technician before attempting to perform any work you are not qualified to do. Automobiles can be hazardous to work on; be sure to take all necessary safety precautions. Failure to do so may result in property damage or personal injury. Certain motor vehicle standards and performance requirements may apply to your motor vehicle (such as Federal Motor Vehicle Safety Standards by the National Highway Traffic Safety Administration). Be sure that your work is performed in accordance with such standards and that you do not disable any motor vehicle safety feature.

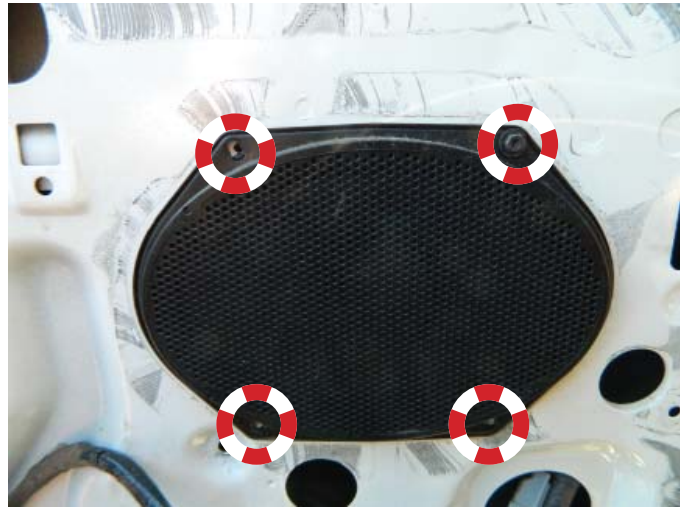
©2013 Dorman Products, Inc.

No reproductions in whole or in part without prior written approval.

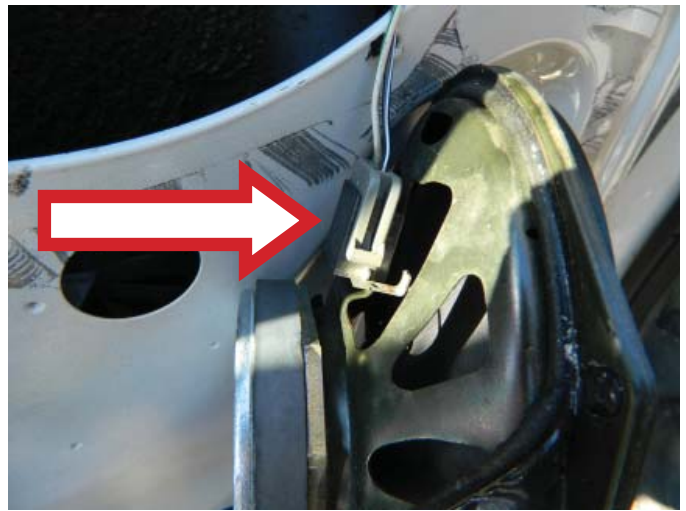
# INSTALL/REMOVAL INSTRUCTIONS: WINDOW REGULATOR

**ATTENTION:** Refer to the appropriate shop manual for your vehicle to obtain specific service procedures for this part. If you do not have a service manual or lack the skill to install this part, it is recommended that you seek the services of a qualified technician. Pay special attention to all cautions and warnings included in the shop manual. Read and follow all instructions carefully.

**STEP 6:** Using a T-20 Torx bit, remove the four (4) door speaker retaining screws.



**STEP 7:** Disconnect the door speaker.



**STEP 8:** Remove the water vapor barrier.



**Disclaimer:**

Even though every attempt is made to ensure this information is complete and accurate, it is impossible to account for all possible circumstances or situations. Please consult with a qualified auto technician before attempting to perform any work you are not qualified to do. Automobiles can be hazardous to work on; be sure to take all necessary safety precautions. Failure to do so may result in property damage or personal injury. Certain motor vehicle standards and performance requirements may apply to your motor vehicle (such as Federal Motor Vehicle Safety Standards by the National Highway Traffic Safety Administration). Be sure that your work is performed in accordance with such standards and that you do not disable any motor vehicle safety feature.

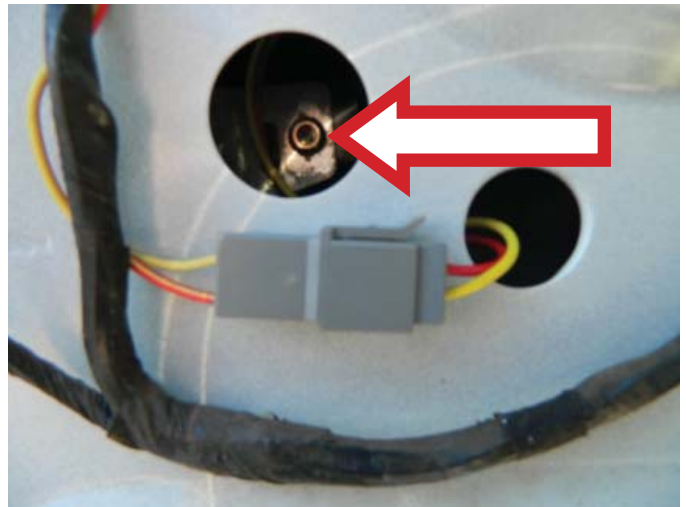
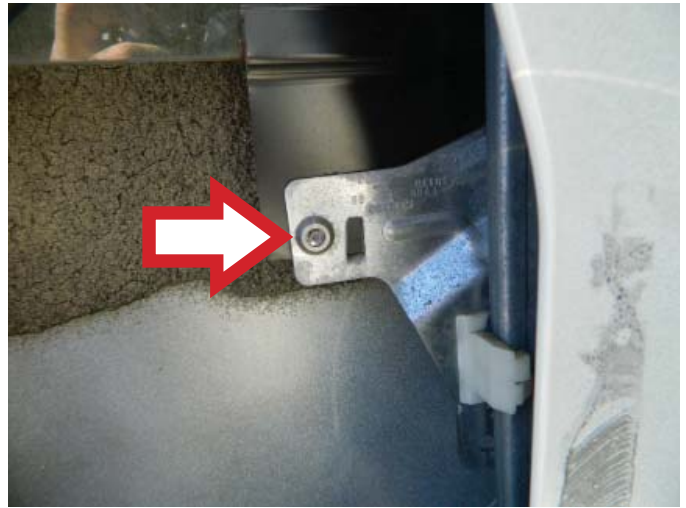
©2013 Dorman Products, Inc.

No reproductions in whole or in part without prior written approval.

# INSTALL/REMOVAL INSTRUCTIONS: WINDOW REGULATOR

**ATTENTION:** Refer to the appropriate shop manual for your vehicle to obtain specific service procedures for this part. If you do not have a service manual or lack the skill to install this part, it is recommended that you seek the services of a qualified technician. Pay special attention to all cautions and warnings included in the shop manual. Read and follow all instructions carefully.

**STEP 9:** Lower the door glass, exposing the rivets mounting the door glass to the window regulator. Once the mounting rivets are exposed, use your 1/4" drill bit and 3/8" drill to remove the rivets. **CAUTION:** USE CAUTION WHILE REMOVING THE RIVETS. FAILURE TO DO SO WILL RESULT IN GLASS BREAKAGE.



**STEP 10:** Once the door glass has been disconnected from the window regulator, manually slide the door glass into the closed position and hold in place with a saddle cup assembly, painter's tape, or a wedge.

Disclaimer:

Even though every attempt is made to ensure this information is complete and accurate, it is impossible to account for all possible circumstances or situations. Please consult with a qualified auto technician before attempting to perform any work you are not qualified to do. Automobiles can be hazardous to work on; be sure to take all necessary safety precautions. Failure to do so may result in property damage or personal injury. Certain motor vehicle standards and performance requirements may apply to your motor vehicle (such as Federal Motor Vehicle Safety Standards by the National Highway Traffic Safety Administration). Be sure that your work is performed in accordance with such standards and that you do not disable any motor vehicle safety feature.

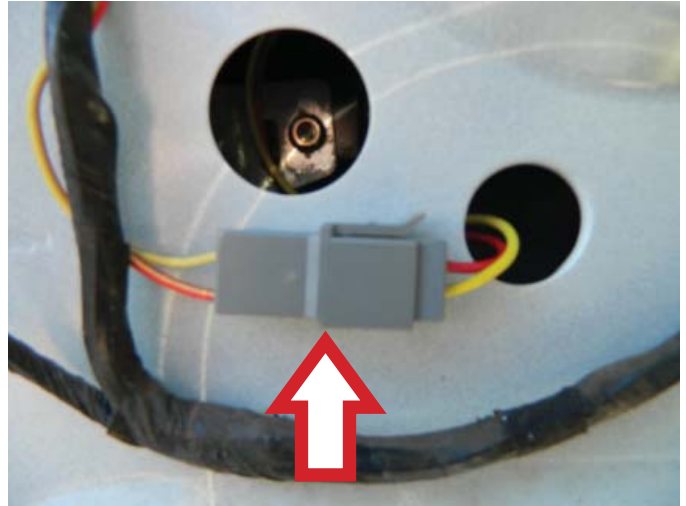
©2013 Dorman Products, Inc.

No reproductions in whole or in part without prior written approval.

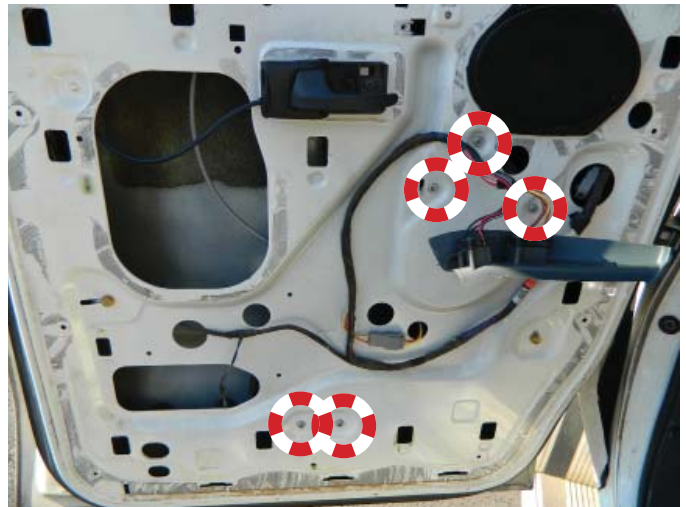
# INSTALL/REMOVAL INSTRUCTIONS: WINDOW REGULATOR

**ATTENTION:** Refer to the appropriate shop manual for your vehicle to obtain specific service procedures for this part. If you do not have a service manual or lack the skill to install this part, it is recommended that you seek the services of a qualified technician. Pay special attention to all cautions and warnings included in the shop manual. Read and follow all instructions carefully.

**STEP 11:** Disconnect the window lift motor.



**STEP 12:** Using a 1/4" drill bit and 3/8" drill, remove the five (5) window regulator retaining rivets. **CAUTION:** YOU ARE ONLY REMOVING THE HEADS OF THE RIVETS.



Disclaimer:

Even though every attempt is made to ensure this information is complete and accurate, it is impossible to account for all possible circumstances or situations. Please consult with a qualified auto technician before attempting to perform any work you are not qualified to do. Automobiles can be hazardous to work on; be sure to take all necessary safety precautions. Failure to do so may result in property damage or personal injury. Certain motor vehicle standards and performance requirements may apply to your motor vehicle (such as Federal Motor Vehicle Safety Standards by the National Highway Traffic Safety Administration). Be sure that your work is performed in accordance with such standards and that you do not disable any motor vehicle safety feature.

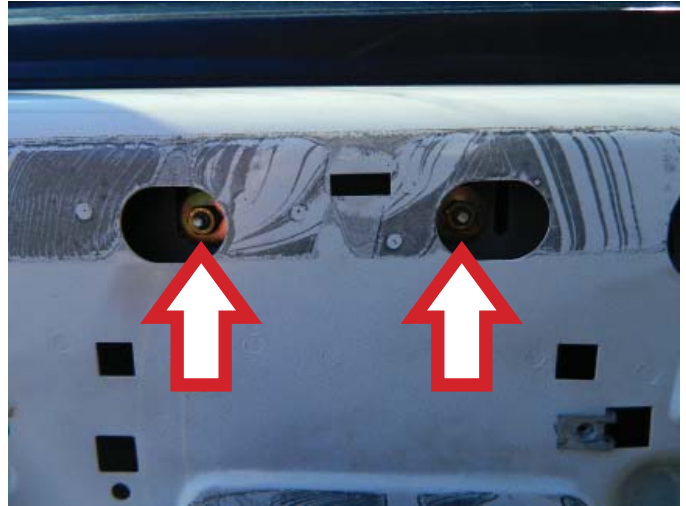
©2013 Dorman Products, Inc.

No reproductions in whole or in part without prior written approval.

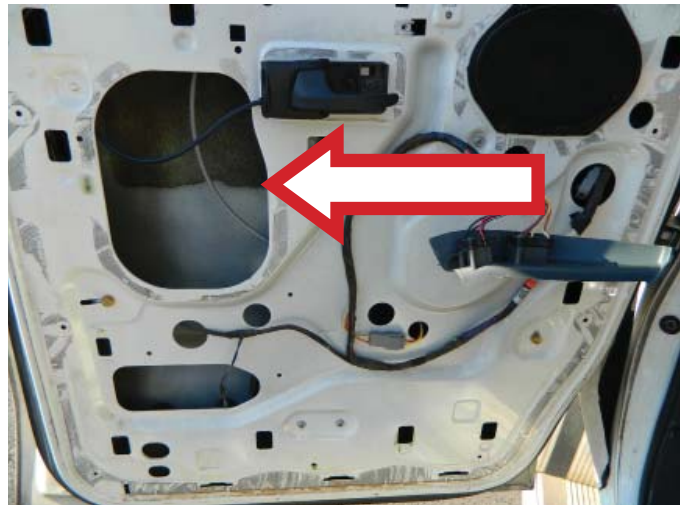
# INSTALL/REMOVAL INSTRUCTIONS: WINDOW REGULATOR

**ATTENTION:** Refer to the appropriate shop manual for your vehicle to obtain specific service procedures for this part. If you do not have a service manual or lack the skill to install this part, it is recommended that you seek the services of a qualified technician. Pay special attention to all cautions and warnings included in the shop manual. Read and follow all instructions carefully.

**STEP 13:** Using a 10mm socket and ratchet assembly, remove the two (2) window regulator retaining nuts.



**STEP 14:** Remove the window regulator through the main access hole.



Disclaimer:

Even though every attempt is made to ensure this information is complete and accurate, it is impossible to account for all possible circumstances or situations. Please consult with a qualified auto technician before attempting to perform any work you are not qualified to do. Automobiles can be hazardous to work on; be sure to take all necessary safety precautions. Failure to do so may result in property damage or personal injury. Certain motor vehicle standards and performance requirements may apply to your motor vehicle (such as Federal Motor Vehicle Safety Standards by the National Highway Traffic Safety Administration). Be sure that your work is performed in accordance with such standards and that you do not disable any motor vehicle safety feature.

©2013 Dorman Products, Inc.

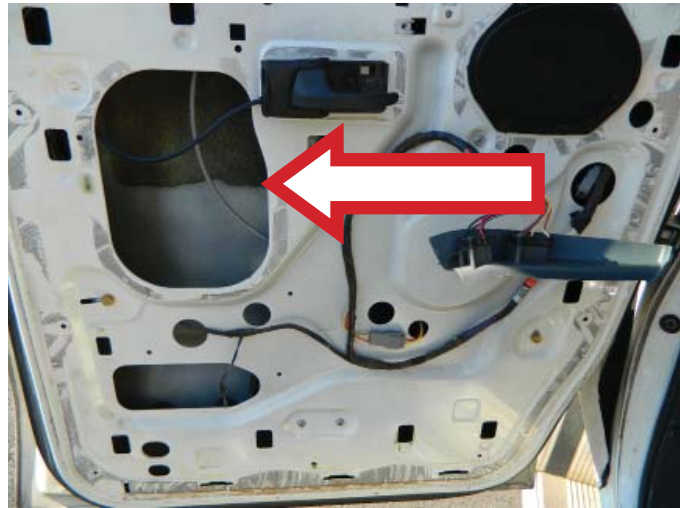
No reproductions in whole or in part without prior written approval.

# INSTALL/REMOVAL INSTRUCTIONS: WINDOW REGULATOR

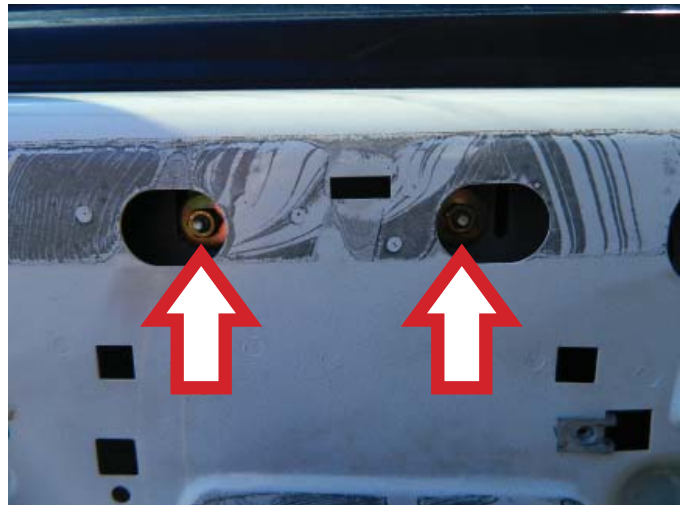
**ATTENTION:** Refer to the appropriate shop manual for your vehicle to obtain specific service procedures for this part. If you do not have a service manual or lack the skill to install this part, it is recommended that you seek the services of a qualified technician. Pay special attention to all cautions and warnings included in the shop manual. Read and follow all instructions carefully.

## Installation Instructions

**STEP 1:** Place the window regulator assembly through the main access hole.



**STEP 2:** Using a 10mm socket and ratchet assembly, attach the upper part of the window regulator.



**Disclaimer:**

Even though every attempt is made to ensure this information is complete and accurate, it is impossible to account for all possible circumstances or situations. Please consult with a qualified auto technician before attempting to perform any work you are not qualified to do. Automobiles can be hazardous to work on; be sure to take all necessary safety precautions. Failure to do so may result in property damage or personal injury. Certain motor vehicle standards and performance requirements may apply to your motor vehicle (such as Federal Motor Vehicle Safety Standards by the National Highway Traffic Safety Administration). Be sure that your work is performed in accordance with such standards and that you do not disable any motor vehicle safety feature.

©2013 Dorman Products, Inc.

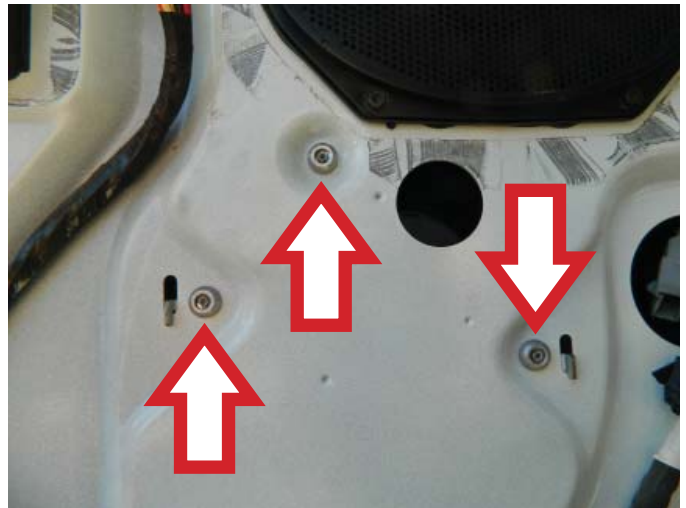
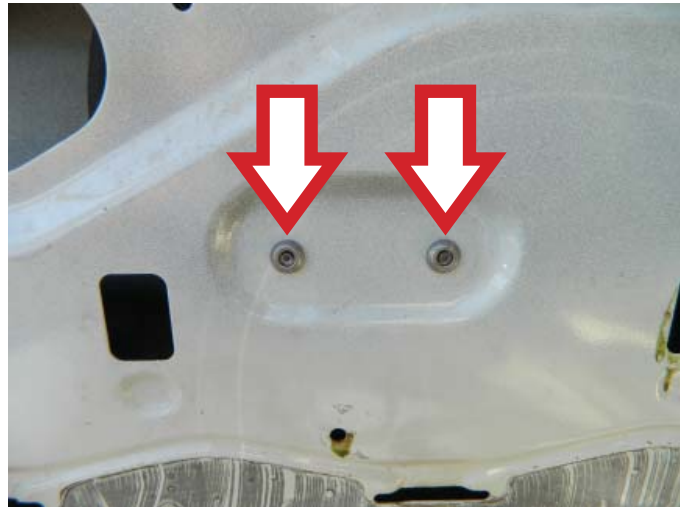
No reproductions in whole or in part without prior written approval.



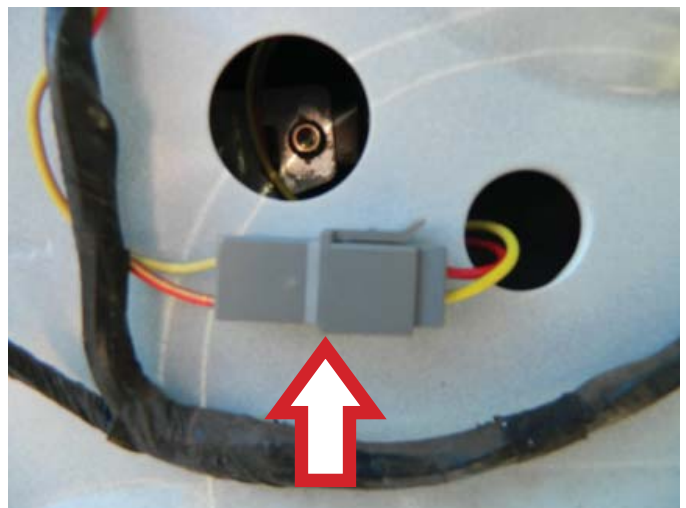
# INSTALL/REMOVAL INSTRUCTIONS: WINDOW REGULATOR

**ATTENTION:** Refer to the appropriate shop manual for your vehicle to obtain specific service procedures for this part. If you do not have a service manual or lack the skill to install this part, it is recommended that you seek the services of a qualified technician. Pay special attention to all cautions and warnings included in the shop manual. Read and follow all instructions carefully.

**STEP 3:** Using Dorman install kit # 702-013, install the necessary hardware for the remaining window regulator retaining screws. **NOTE:** Dorman install kit # 702-013 includes both screws and rivets. If you have access to a pop rivet gun, you may use the included pop rivets. However, you have the option to replace the pop rivets with the included screws and nuts.



**STEP 4:** Connect the window lift motor.



Disclaimer:

Even though every attempt is made to ensure this information is complete and accurate, it is impossible to account for all possible circumstances or situations. Please consult with a qualified auto technician before attempting to perform any work you are not qualified to do. Automobiles can be hazardous to work on; be sure to take all necessary safety precautions. Failure to do so may result in property damage or personal injury. Certain motor vehicle standards and performance requirements may apply to your motor vehicle (such as Federal Motor Vehicle Safety Standards by the National Highway Traffic Safety Administration). Be sure that your work is performed in accordance with such standards and that you do not disable any motor vehicle safety feature.

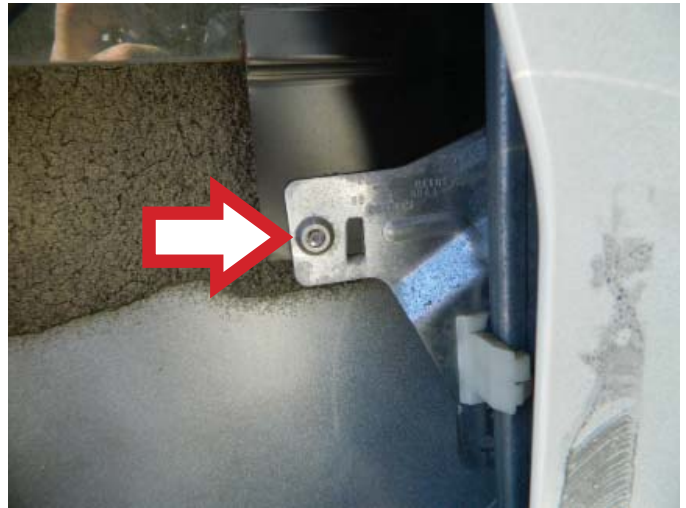
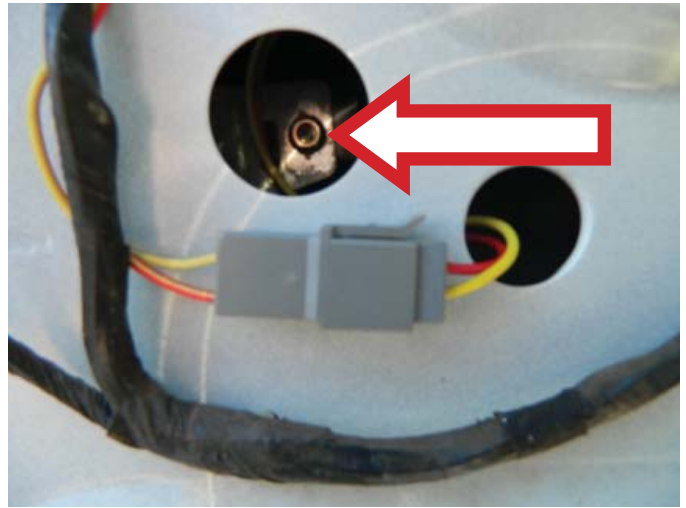
©2013 Dorman Products, Inc.

No reproductions in whole or in part without prior written approval.

# INSTALL/REMOVAL INSTRUCTIONS: WINDOW REGULATOR

**ATTENTION:** Refer to the appropriate shop manual for your vehicle to obtain specific service procedures for this part. If you do not have a service manual or lack the skill to install this part, it is recommended that you seek the services of a qualified technician. Pay special attention to all cautions and warnings included in the shop manual. Read and follow all instructions carefully.

**STEP 5:** Raise or lower the window regulator, aligning the points attaching the window glass to the window regulator. **NOTE:** It is recommended that you use the hardware included in Dorman kit # 702-013 by replacing the pop rivets with screws and nuts. In doing so, you drastically reduce the chance of damaging or breaking the door glass.



**STEP 6:** Manually slide the door glass into position and attach the door glass using Dorman kit # 702-013.

**Disclaimer:**

Even though every attempt is made to ensure this information is complete and accurate, it is impossible to account for all possible circumstances or situations. Please consult with a qualified auto technician before attempting to perform any work you are not qualified to do. Automobiles can be hazardous to work on; be sure to take all necessary safety precautions. Failure to do so may result in property damage or personal injury. Certain motor vehicle standards and performance requirements may apply to your motor vehicle (such as Federal Motor Vehicle Safety Standards by the National Highway Traffic Safety Administration). Be sure that your work is performed in accordance with such standards and that you do not disable any motor vehicle safety feature.

©2013 Dorman Products, Inc.

No reproductions in whole or in part without prior written approval.

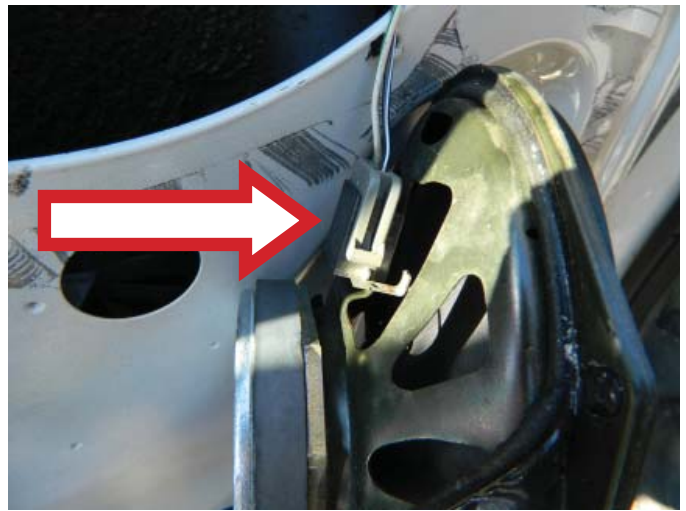
# INSTALL/REMOVAL INSTRUCTIONS: WINDOW REGULATOR

**ATTENTION:** Refer to the appropriate shop manual for your vehicle to obtain specific service procedures for this part. If you do not have a service manual or lack the skill to install this part, it is recommended that you seek the services of a qualified technician. Pay special attention to all cautions and warnings included in the shop manual. Read and follow all instructions carefully.

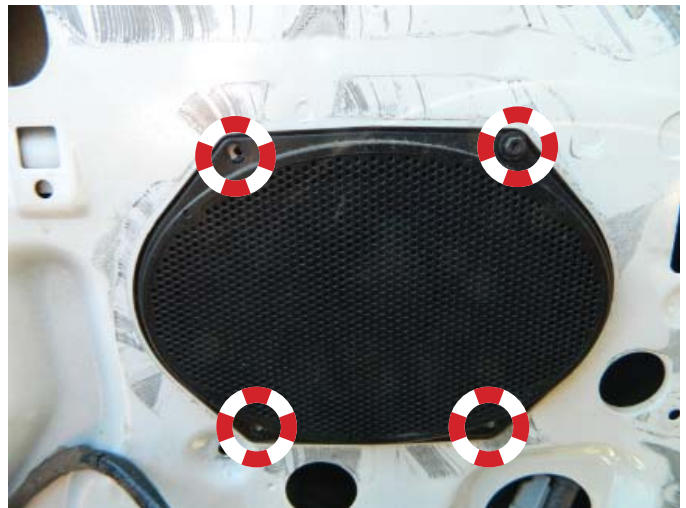
**STEP 7:** Install the water vapor barrier.



**STEP 8:** Connect the door speaker.



**STEP 9:** Using a T-20 Torx bit or 6mm socket and ratchet assembly, install the four (4) door speaker retaining screws.



**Disclaimer:**

Even though every attempt is made to ensure this information is complete and accurate, it is impossible to account for all possible circumstances or situations. Please consult with a qualified auto technician before attempting to perform any work you are not qualified to do. Automobiles can be hazardous to work on; be sure to take all necessary safety precautions. Failure to do so may result in property damage or personal injury. Certain motor vehicle standards and performance requirements may apply to your motor vehicle (such as Federal Motor Vehicle Safety Standards by the National Highway Traffic Safety Administration). Be sure that your work is performed in accordance with such standards and that you do not disable any motor vehicle safety feature.

©2013 Dorman Products, Inc.

No reproductions in whole or in part without prior written approval.

# INSTALL/REMOVAL INSTRUCTIONS: WINDOW REGULATOR

**ATTENTION:** Refer to the appropriate shop manual for your vehicle to obtain specific service procedures for this part. If you do not have a service manual or lack the skill to install this part, it is recommended that you seek the services of a qualified technician. Pay special attention to all cautions and warnings included in the shop manual. Read and follow all instructions carefully.

**STEP 10:** Push the power switch assembly through the opening of the interior door trim panel.

**STEP 11:** To install the interior door trim panel, align the ledge on the door weather stripping with the back side of the interior door trim panel. Be sure to align the interior door trim panel retainers with the corresponding holes that are pre-cut on the door.

**STEP 12:** Using a Phillips head screw driver, attach the power switch assembly.



**STEP 13:** Using a Phillips head screwdriver, install the interior door handle bezel assembly.



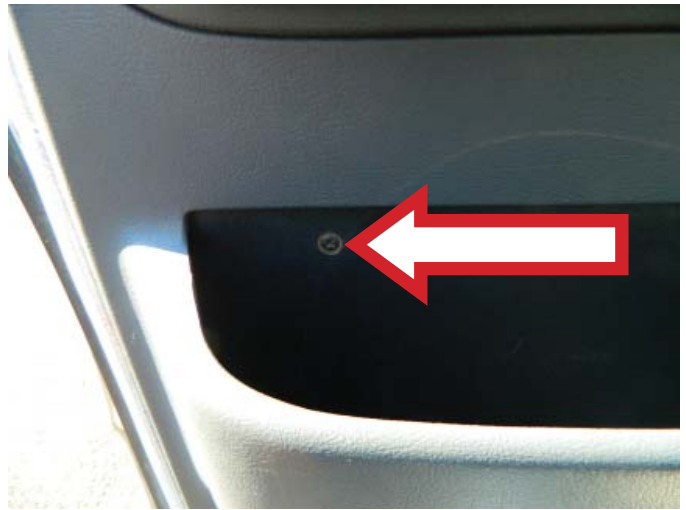
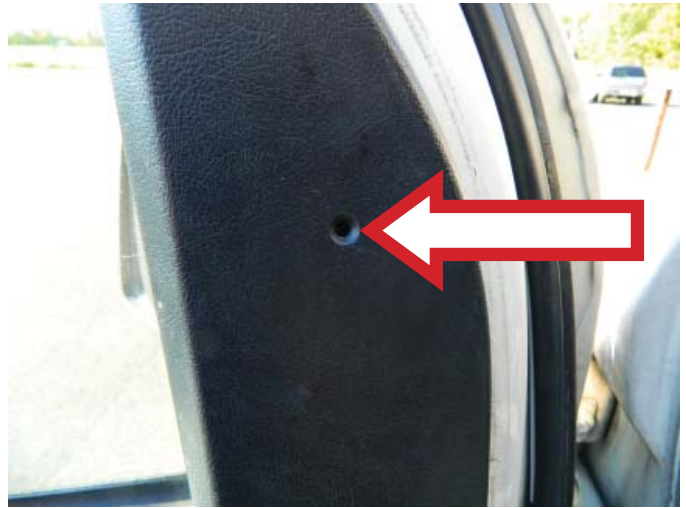
**Disclaimer:**

Even though every attempt is made to ensure this information is complete and accurate, it is impossible to account for all possible circumstances or situations. Please consult with a qualified auto technician before attempting to perform any work you are not qualified to do. Automobiles can be hazardous to work on; be sure to take all necessary safety precautions. Failure to do so may result in property damage or personal injury. Certain motor vehicle standards and performance requirements may apply to your motor vehicle (such as Federal Motor Vehicle Safety Standards by the National Highway Traffic Safety Administration). Be sure that your work is performed in accordance with such standards and that you do not disable any motor vehicle safety feature.

# INSTALL/REMOVAL INSTRUCTIONS: WINDOW REGULATOR

**ATTENTION:** Refer to the appropriate shop manual for your vehicle to obtain specific service procedures for this part. If you do not have a service manual or lack the skill to install this part, it is recommended that you seek the services of a qualified technician. Pay special attention to all cautions and warnings included in the shop manual. Read and follow all instructions carefully.

**STEP 14:** Using a Phillips head screw driver, install the upper and lower interior door trim panel retaining screws.



**STEP 15:** Verify that all of the interior door trim panel retaining screws are secure and that the window regulator assembly is operating properly.

**We appreciate your opinions regarding this product!  
Please call our Technical Assistant with any challenges or suggestions  
regarding the installation or operation of this product.**

**1-800-523-2492**

Disclaimer:

Even though every attempt is made to ensure this information is complete and accurate, it is impossible to account for all possible circumstances or situations. Please consult with a qualified auto technician before attempting to perform any work you are not qualified to do. Automobiles can be hazardous to work on; be sure to take all necessary safety precautions. Failure to do so may result in property damage or personal injury. Certain motor vehicle standards and performance requirements may apply to your motor vehicle (such as Federal Motor Vehicle Safety Standards by the National Highway Traffic Safety Administration). Be sure that your work is performed in accordance with such standards and that you do not disable any motor vehicle safety feature.

©2013 Dorman Products, Inc.

No reproductions in whole or in part without prior written approval.