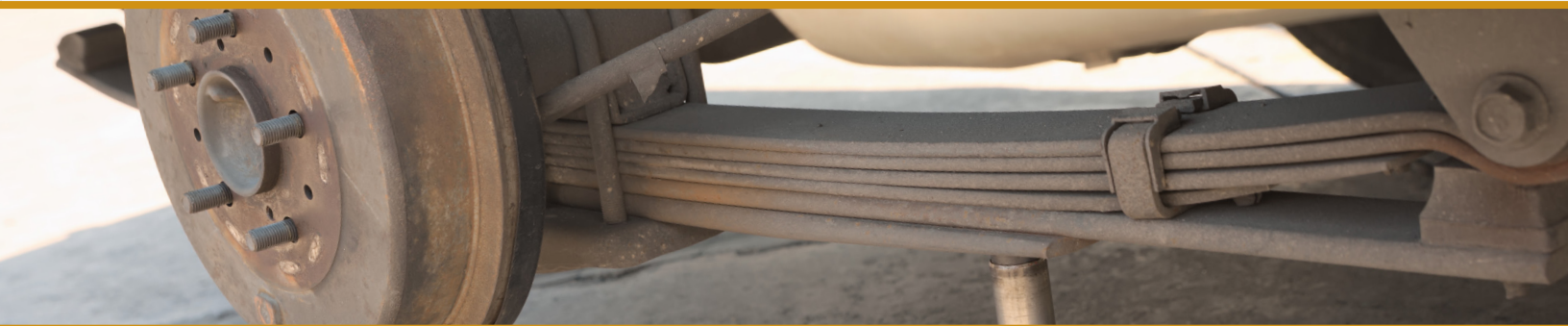


RESTORE YOUR UNEVEN SUSPENSION FOR A SMOOTHER RIDE

Over 40 SKUs covering over 38 million repair opportunities



Coverage Now Available for Popular Ford and Medium Duty Vehicles



929-225
Ford 2004-99

929-233
Ford F-150, Lincoln Mark LT 2008-04

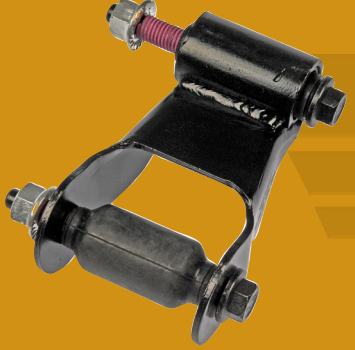
- **ENGINEERED** from high-quality materials for long lasting durability
- **COATED** for resistance to rust and corrosion
- **DIRECT REPLACEMENT** ensuring easy installation and proper fit

FAILURE MODE:

- Fatigue, crack and rust over time
- Failure results in the inability of the spring to support the weight of the vehicle

ALSO AVAILABLE: SHACKLES AND HANGERS

POWDER-COATED for long lasting corrosion protection



722-019
Ford 2011-09, Ford 2004-97, Lincoln 2002



722-081
Chrysler, Dodge Minivan 2007-01



APPLICATIONS

HIGHLIGHTED LEAF SPRINGS	
Applications	Dorman #
Chevrolet 1999-88, GMC 1999-88	929-107
Chevrolet 2000-88, GMC 2000-88	929-108
Chevrolet 2007-00, GMC 2007-00	929-115
Chevrolet 2007-99, GMC 2007-05, GMC 2003-01, GMC 1999	929-125
Chevrolet 2010-99, GMC 2010-99	929-126
Chevrolet Avalanche 2500 2006-02	929-120
Chevrolet C1500 1999-88, Chevrolet K1500 1999-88, GMC C1500 1999-88, GMC K1500 1999-88	929-116
Chevrolet Express 1500 2013-96, GMC Savana 1500 2013-96	929-110
Chevrolet S10 Blazer 1994-83, GMC S15 Jimmy 1991-83, Oldsmobile Bravada 1994-91	929-105
Chevrolet Silverado 1500 2013-07, GMC Sierra 1500 2013-07	929-128
Dodge Ram 1500 1997-94, Dodge Ram 2500 1997	929-302
Dodge Sprinter 2500 2009-07, Mercedes-Benz Sprinter 2500 2014-10, Volkswagen Crafter 2009-08	929-601
Dodge Sprinter 3500 2006-03, Freightliner Sprinter 3500 2006-02	929-600
Ford 1990-87	929-205
Ford Bronco II 1989, Ford Explorer 2001-91, Ford Ranger 1997-94	929-206
Ford E-250 2007-93, Ford E-350 2007-93	929-234
Ford Explorer 2001-95, Mercury Mountaineer 2001-97	929-219
Ford F-150 1996-80, Ford F-250 1996-80	929-232
Ford F-150 2008-04, Lincoln Mark LT 2008-04	929-233

HIGHLIGHTED LEAF SPRINGS	
Applications	Dorman #
Ford F-150 2008-06, Lincoln Mark LT 2008-06	929-228
Ford F-250 1997-81, Ford F-350 1997-81	929-230
Ford F-250 Super Duty 2004-99, Ford F-350 Super Duty 2004-99	929-226
Ford F-250 Super Duty 2016-11, Ford F-350 Super Duty 2016-11	929-220
Ford F-350 Super Duty 2000-99	929-224
Ford F-350 Super Duty 2001-99	929-231
Ford F-350 Super Duty 2003-02	929-217
Ford F-350 Super Duty 2004-99	929-218
Ford Ranger 1995-91	929-229
Ford Ranger 2003-93	929-202
Ford Ranger 2011-04	929-216
Ford Super Duty 2004-99	929-225
Ford Transit Connect 2013-10	929-250
GMC Sierra 3500 2005-01, Chevrolet Silverado 3500 2005-01	929-129
Jeep Cherokee 2001-84, Jeep Wagoneer 1990-84	929-301
Nissan Xterra 2013-05	929-502
Toyota Tacoma 1997-95	929-400
Toyota Tacoma 2000-98	929-401
Toyota Tacoma 2012-05	929-113
Toyota Tacoma 2012-05	929-114
Toyota Tundra 2004-00	929-402
Toyota Tundra 2004-00	929-403

For complete coverage, visit DormanProducts.com

NEW PRODUCTS • NEW OPPORTUNITIES • NEW SOLUTIONS



DOR74885-2

Dorman Products, Inc. | 3400 East Walnut Street | Colmar, PA 18915

Corporate Office and Customer Service: 1-800-523-2492

New Product Idea Hotline: 1-800-336-3575

©2016 No reproduction in whole or in part without prior written approval.

