

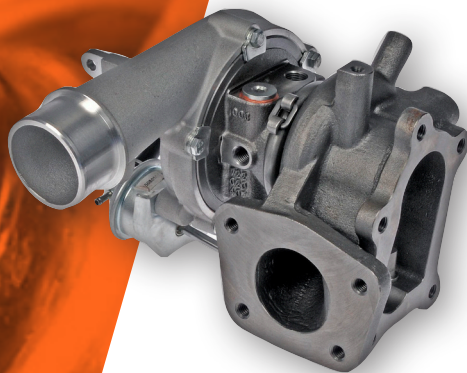


DORMAN[®]
NEW SINCE 1918

TURBOCHARGER PRODUCT LINE GUIDE



NEW PRODUCTS • NEW SOLUTIONS • NEW OPPORTUNITIES



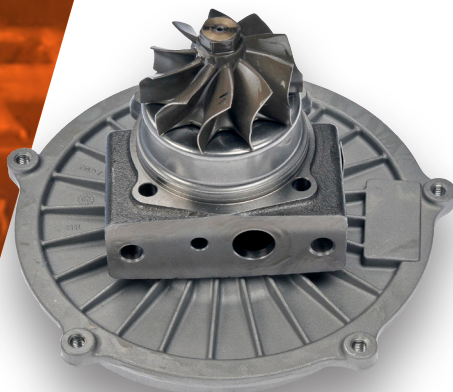
917-152
Mazda 3 2013-07,
Mazda 6 2007-06

TURBOCHARGERS

Balance tested individually with results included in product packaging
Installation components included for a complete repair

Original Failure Mode: Original shaft seals wear out or bearings fail from improper oil flow

26 SKUS AVAILABLE



667-001
Ford 7.3L 2003-99

TURBOCHARGER CARTRIDGES

Balance tested individually with results included in product packaging
Installation components included for a complete repair

Original Failure Mode: Original shaft seals wear out or bearings fail from improper oil flow

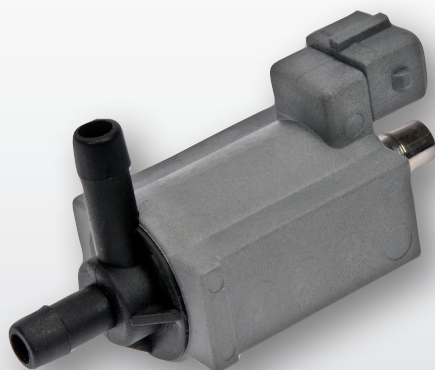
7 SKUS AVAILABLE

OE PROBLEM:

Original turbocharger assemblies wear over time, and the Dealer only offers complete assembly replacements



Dorman enables technicians to replace just the worn original turbo cartridge, without the expense of purchasing a new housing



667-106
Audi 2006-98
SEAT 2006-01
Volkswagen 2012-11, 2006-99

BOOST SOLENOIDS

Vehicle try-on and material tested to meet product standards for quality
Direct replacement for a proper fit every time

Original Failure Mode: Internals collect dirt a start to stick and solenoid wears out over time

6 SKUS AVAILABLE

INTERCOOLER BOOTS & HOSE KITS

Boots Constructed from durable Nitrile for better oil- and heat-resistance

Includes clamps (where applicable)

Original Failure Mode: Plastic tubes can crack or rub on nearby parts and leak; silicon boots degrade and slip off tubes.



904-272
Ford 2007-04

10 SKUS AVAILABLE

OE PROBLEM:

Original plastic tube dries out leading to cracks and leaks



Dorman's Intercooler hoses are upgraded to a metal tube design to effectively withstand the intense pressure of the turbo system

TURBOCHARGER FEED & RETURN LINES

Parts have undergone SAE J343 testing for burst, tensile, cold bend and leakage (where applicable)

Direct fit replacement, no modifications necessary

Original Failure Mode: Oil sludge blocks flow of oil to the Turbo, rust issues and connections leak over time



904-137
Chevrolet 2010-06,
GMC 2010-06

20 OVER SKUS AVAILABLE

V-BAND EXHAUST CLAMPS

Constructed of stainless steel for corrosion resistance and long service life

Complete kit – Includes gaskets for a complete repair (where applicable)

Original Failure Mode: Rust and repeated removal can deform clamps



904-250
Ford 2003-99

12 SKUS AVAILABLE

