



**EDELBROCK BELT TENSIONER BRACE**  
**For 4.6L Ford V8 Engines**  
**Part #15806**  
**INSTALLATION INSTRUCTIONS**

**Please** study these instructions carefully before installing your new tensioner brace. If you have any questions, do not hesitate to contact our **Technical Hotline at: (800) 416-8628** from 7:00 am to 5:00 pm, Monday through Friday, Pacific Standard Time.

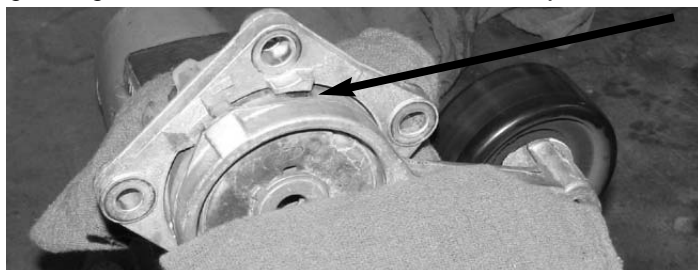
**DESCRIPTION:** This brace is designed to improve the durability of the stock serpentine belt tensioner on the 4.6L/5.4L Modular Ford V8 engines.

**INSTALLATION:**

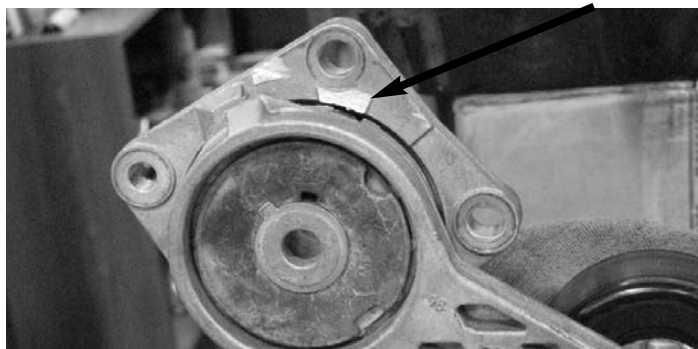
1. Use a 1/2" drive breaker bar to loosen the belt tensioner enough to slip off the serpentine belt.
2. Use a 10mm socket to loosen the three bolts that hold the tensioner in place and remove the arm.



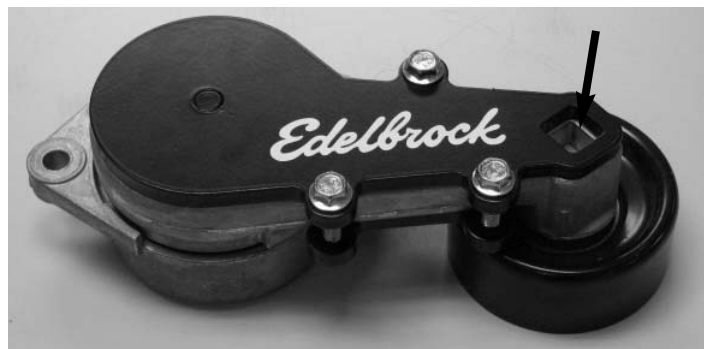
3. Place the tensioner in a cloth wrapped vice and use a grinding wheel or hacksaw to remove the stop.



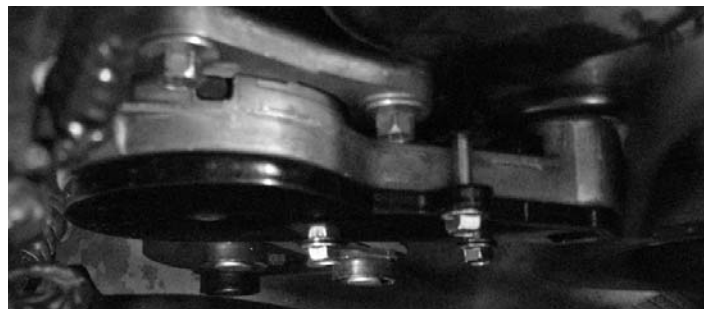
4. Use a grinding wheel or file to ensure that the area that was ground down is smooth and free of burrs.



5. Use a 10mm socket to install the three tensioner brace bolts, making sure to line up the square holes.



6. Use a 10mm socket to reinstall the tensioner.



**Edelbrock LLC**  
**2700 California St., Torrance, CA 90503**  
**Tech Line: 1-800-416-8628**  
**Office: 310-781-2222**