

CARDONE™ ProTech®

Supporting Today's Vehicle Technician



47-1377: Resetting Limit Switch

Application Chevy/GMC, Ford, Mazda and Isuzu 4-wheel drive vehicles equipped with Transfer Case Motors.

Problem Unable to change to 4-wheel drive mode.

Cause Possible Transfer Case Motor failure.

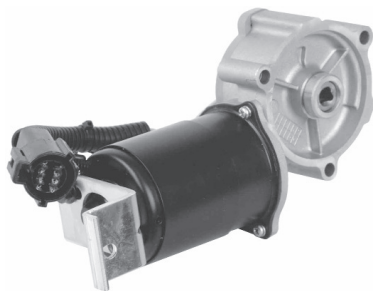
Solution Replace defective original motor with a CARDONE™ remanufactured unit.

Installation Tips

Most units fail because of water or mud intrusion. Carefully inspect motor boot or protective coverings. Be sure connector seals can keep water and debris out. Check wiring harness and connector. Replace or repair wiring as necessary. After installation, periodically select 4-wheel drive mode to ensure operation when needed.

Replacement motors for GM vehicles are supplied in 2-wheel drive position. If necessary, select or move transfer case into 2-wheel drive before installation of replacement motor. GM applications will require a scan tool to clear the codes from the transmission control module (refer to the vehicle service manual for correct tool and procedures).

Ford applications require transfer of wire connector pins. Be sure to record pin location before removing the original unit.



Typical Ford Motor



Typical GM Motor