



## Holley EFI Software/Firmware for Gen III HEMI Applications

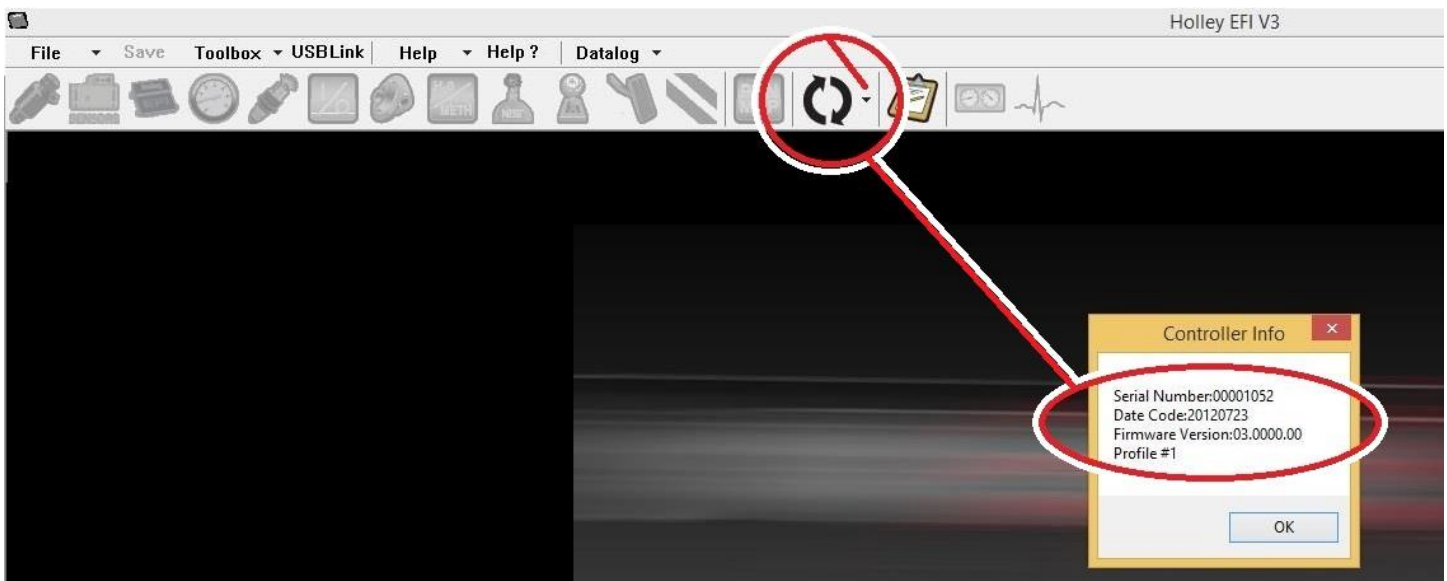
Please verify that the ECU you are using has the proper firmware (as well as having the proper tuning software version) required to run your Gen III HEMI engine. To verify this, look at the back of the ECU. There will be a decal on the back, indicating what firmware version was originally installed. The firmware version is located underneath the barcode after the alphabetic character. You can also confirm with certainty the firmware version when you connect to the ECU.

In the example below, the decal indicates firmware version 0587. This ECU does **NOT** have the proper firmware as installed by the factory. To operate a HEMI engine, Holley EFI "V3" Software and Firmware is required. The minimum software required will be version 3.0.0, Build 2. The minimum firmware version will be 03.0000.00 (note that "V3" versions will start with a "03" at the beginning).

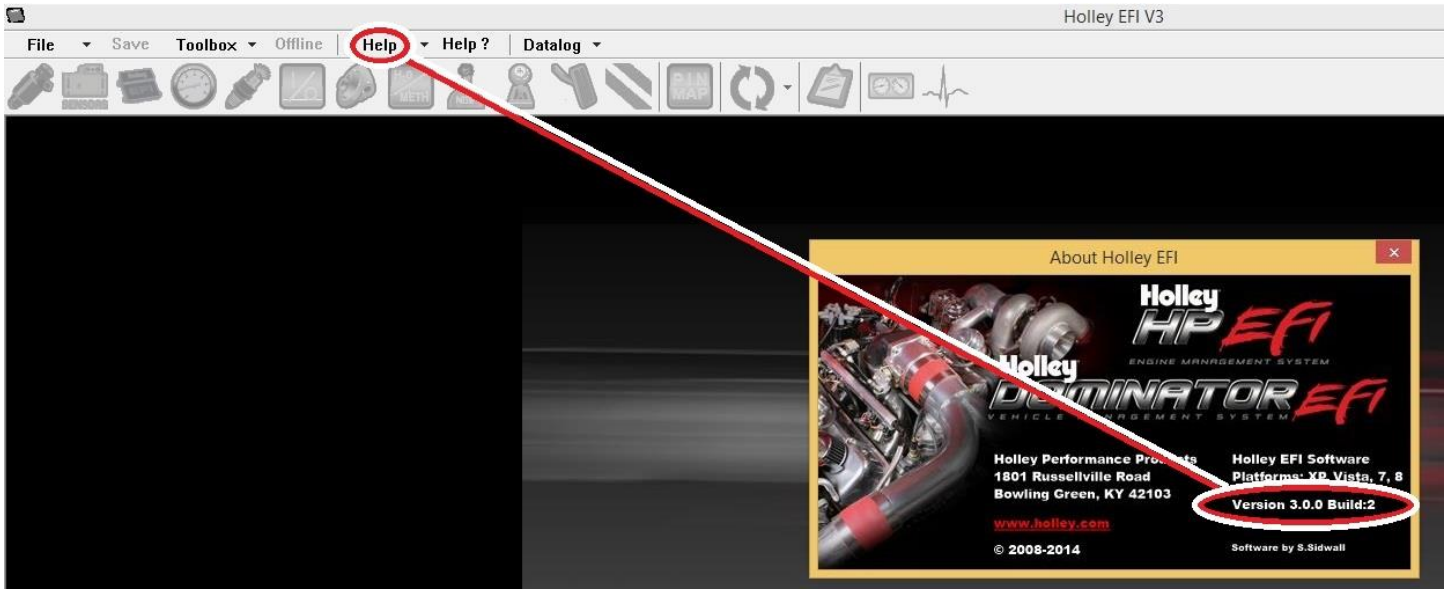
If your ECU has the label on the right, it will **NOT** have the proper firmware from the factory.



The firmware version can be confirmed by connecting with the ECU, clicking on the down arrow on the sync button (circled below) and selecting "Get ECU Info". The picture below indicates the proper minimum firmware version.



To determine the software version once installed, go to “HELP” (circled below) and “ABOUT” in the software and it will bring up the following:



The version is in the bottom right corner (circled above).

To obtain the proper software and firmware, please send an email to: [2xsupport@holley.com](mailto:2xsupport@holley.com). Put in a subject of “HEMI software”. Please include your name and a return email address. You will be contacted with information on obtaining the software and firmware within two business days.

Technical Support: 1-866-464-6553

© 2014 Holley Performance Products, Inc. All rights reserved.

**199R10721**

**Revision Date: 9-18-14**