



## **Rebuild and Adjustment Manual For Summit Racing Street & Strip Carburetors**

**WARNING!** These instructions must be read and fully understood before beginning installation. Failure to follow these instructions may result in poor performance, vehicle damage, personal injury, or death. If these instructions are not fully understood, installation should not be attempted.

# EXPLODED VIEW – M2008

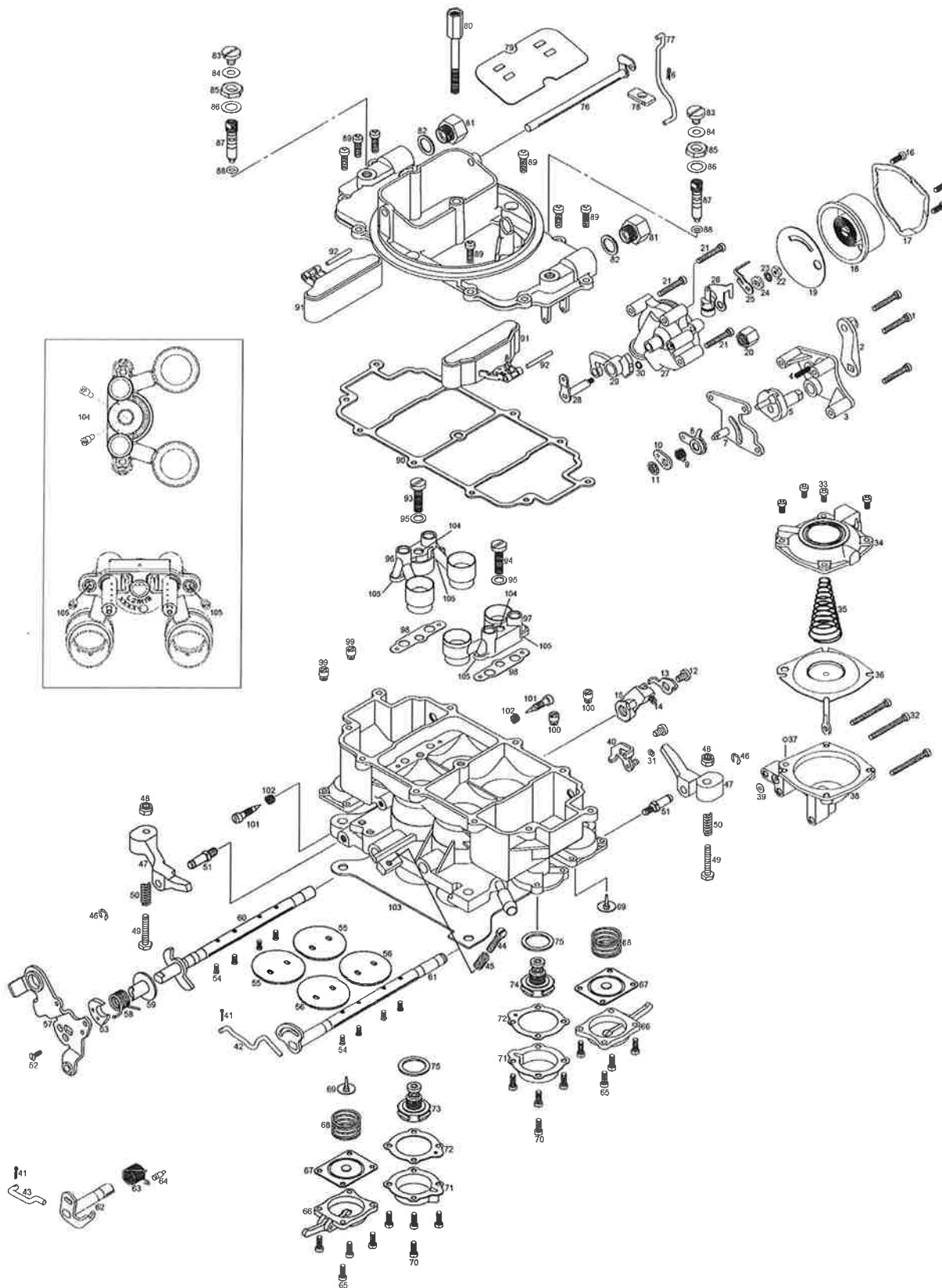


Figure 2

## REASSEMBLY

Reassemble in reverse order of disassembly. Note the special instructions and follow the calibration numbers in the **SPECIFICATIONS** section in making final adjustments.

Manually operate the throttle lever and choke mechanism, checking for binding or malfunction. Any binding or interference could cause throttle to stick during operation and result in loss of carburetor throttle control (or uncontrolled engine speed).

**WARNING!** Check carburetor to be sure there are no leaks or flooding, which might cause a fire.

## SPECIAL INSTRUCTIONS FOR ALL CARBURETORS

- IDLE ADJUSTING NEEDLES -** Tapered portion of needle must be straight and smooth. If grooved or ridged, a new needle should be installed.
- PUMP INLET CHECK VALVE -** Lubricate tip of new valve and insert in center hole in pump cavity. Pull through from fuel bowl side, until seated.
- THROTTLE SHAFTS -** **DO NOT** remove throttle shafts or plates. If throttle plates are nicked or damaged, it will be necessary to replace them..
- CHECK BALL -** Your kit may contain more than one check ball. The check ball removed from your carburetor should be compared to the new check ball for correct sizing before installation.

## POWER VALVE IDENTIFICATION

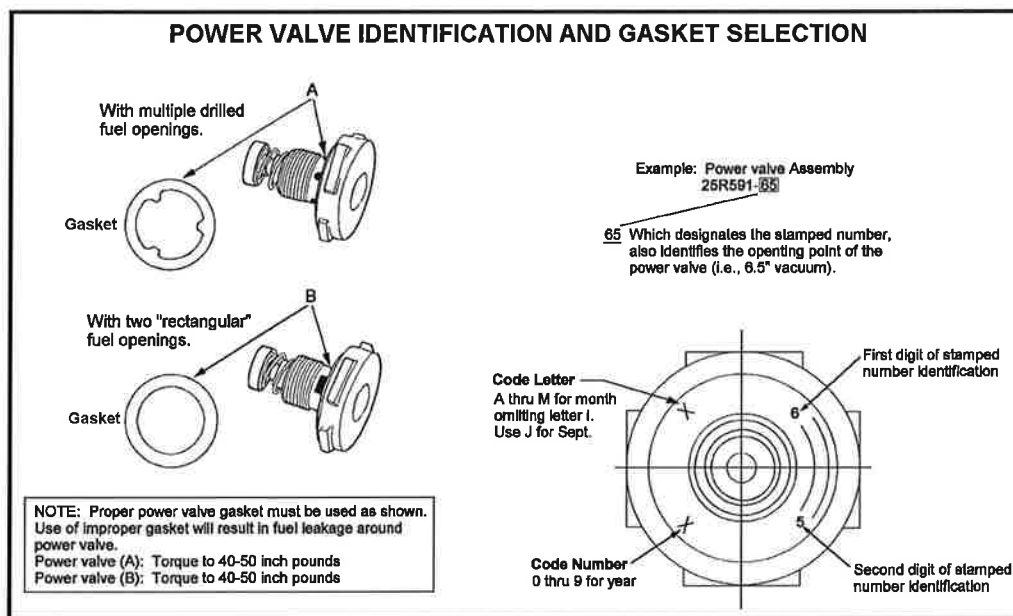


Figure 3

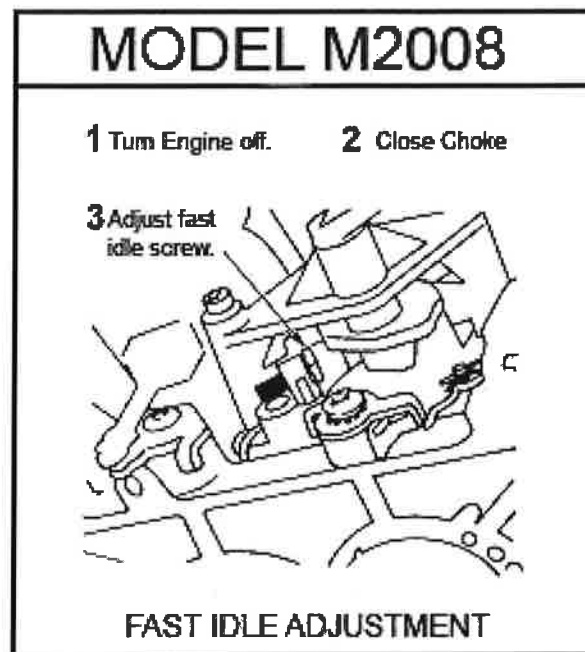


Figure 7

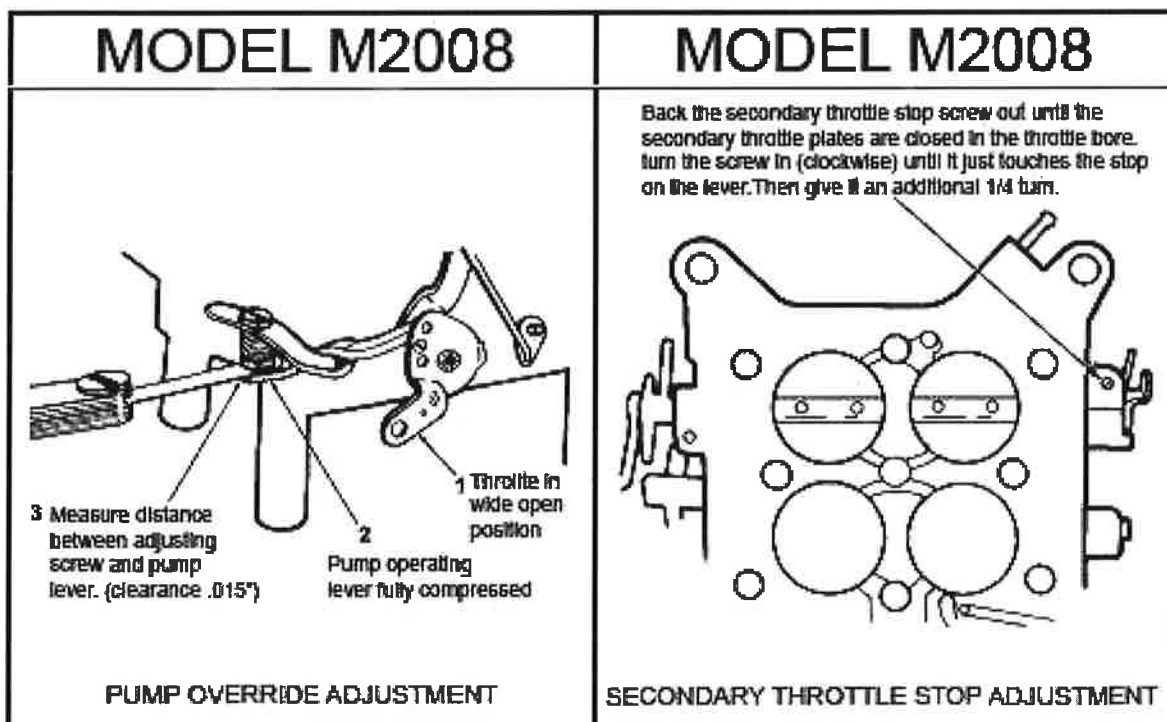


Figure 8