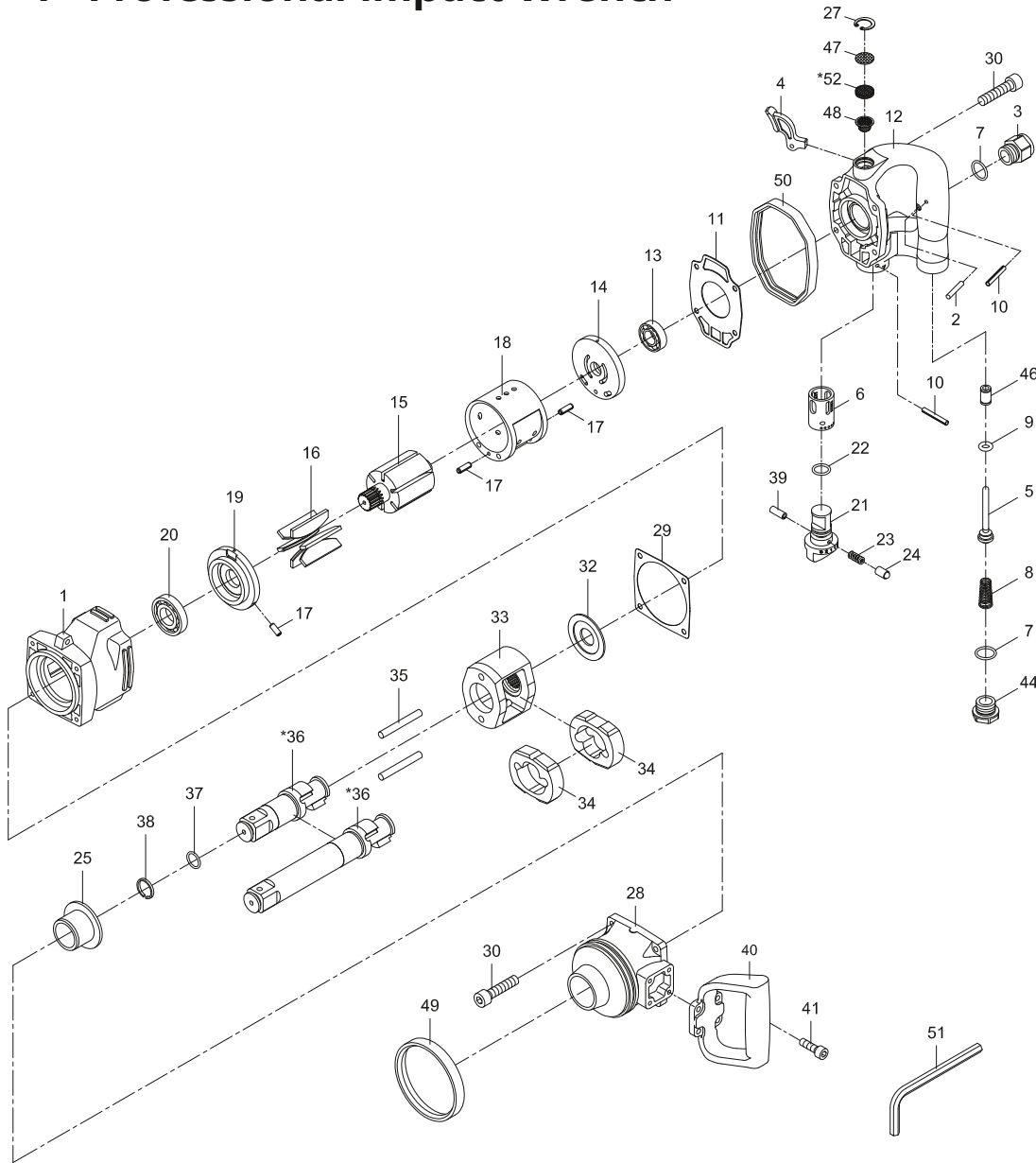


1" Professional impact wrench

K 10385
K 10386



K 10389 Valve kit: Pos 5, 7, 8, 9, 46

K 10390 Air inlet kit: Pos 3, 7

K 10391 Engine kit: Pos 11, 16, 22, 23, 24

K 10392 Cage: Pos 33

K 10393 Gearing kit: Pos 29, 34, 35

K 10394 Anvil L=2": Pos 36, 37, 38

K 10395 Anvil L=7": Pos 36, 37, 38

K 10396 Bearing kit: Pos 13, 20

K 10399 Handle: Pos 40

Pos.	Parts No.	Description
1		Motor housing
2		Pin
3	K 10390	Air inlet
4		Trigger
5	K 10389	Valve stem
6		Valve bushing
7	K 10389, K 10390	O-ring (2 pcs.)
8	K 10389	Valve spring
9	K 10389	O-ring
10		Spring pin (2 pcs.)
11	K 10391	Gasket
12		Rear cover
13	K 10396	Ball bearing
14		Rear end plate
15		Rotor
16	K 10391	Rotor blade (6 pcs.)
17		Spring pin (3 pcs.)
18		Cylinder
19		Front end plate
20	K 10396	Ball bearing
21		Air regulator
22	K 10391	O-ring
23	K 10391	Spring
24	K 10391	Pin

Pos.	Parts No.	Description
25		Anvil bushing
27		Internal ring
28		Hammer case
29	K 10393	Gasket
30		Screw (8 pcs.)
32		Washer
33	K 10392	Retainer cage
34	K 10393	Hammer
35	K 10393	Hammer pin (2 pcs.)
36*	K 10394	Anvil L=2"
	K 10395	Anvil L=7"
37	KR 9805-2	O-ring
38	KR 9805-2	Retainer ring
39		Spring pin
40	K 10399	Dead handle
41		Screw (4 pcs.)
44		Screw
46	K 10389	Bushing
47		Net
48		Screen
49		Rubber ring
50		Rubber ring
51		Hex. key wrench
52		Muffler material